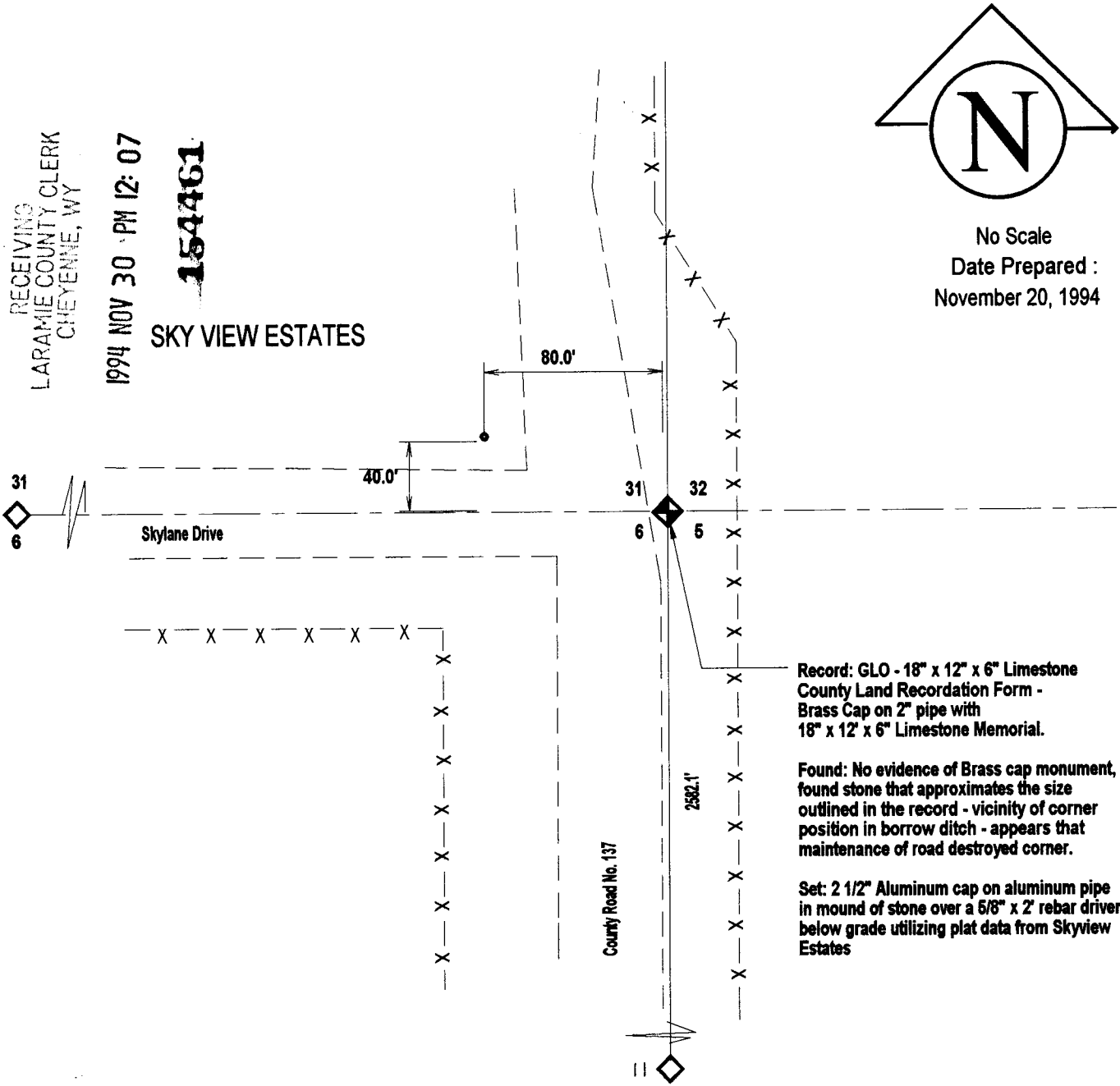


State of Wyoming Corner Record

(In compliance with the *CORNER PERPETUATION AND FILING ACT*, Wyoming Statutes, 1977, Section 36-11-101, et. seq., and the rules and Regulations of the Board of Registration for Professional Engineers and Professional Land Surveyors).

Reverse side of this form may be used if more space is needed.

Record of original survey and citation of source of historical information (if corner is lost or obliterated). Description of corner monumentation evidence found and/or monument and accessories established to perpetuate the location of this corner. Sketch of relative location of monument, accessories, and reference points with course and distance to adjacent corner(s) (if determined in this survey). Method and rationale for reestablishment of lost or obliterated corner.



Date of Field Work July, 1994 Office Reference J-S Ranch Subdivision

CROSS INDEX DIAGRAM

	1	2	3	4	5	6	7	8	9	10	11	12	13	14	15	16	17	18	19	20	21	22	23	24	25
A																									
B																									
C																									
D																									
E																									
F																									
G																									
H																									
J																									
K																									
L																									
M																									
N																									
O																									
P																									
Q																									
R																									
S																									
T																									
U																									
V																									
W																									
X																									
Y																									
Z																									

Firm / Agency, Address
Cornerstone Surveying Company
 4005 Snyder Avenue
 Cheyenne, Wyoming
 Telephone Number 307 - 637 - 6958

This corner record was prepared by me or under my direction and supervision.
 SEAL & SIGNATURE

 Date 11-20-94

Corner Name NW 1/4 Section 5 T 14 R 64 : 6th P.M. Cross Index No. A-5
 SBRPEPLS/PLSW: March 1994